


## Human IFN- $\alpha$ 2a Protein

Cat #:PRP1237

Size: 5 $\mu$ g/20 $\mu$ g/100 $\mu$ g/1mg

### Product Information

	<b>Product Name:</b> Human IFN- $\alpha$ 2a Protein		
<b>REF</b>	<b>Catalog Number:</b> PRP1237	<b>LOT</b>	<b>Lot Number:</b> Refer to product label
	<b>Purity:</b> > 99 % as determined by SDS-PAGE		
	<b>Storage:</b> Store at -20°C		<b>Preparation method:</b> E. coli
	<b>Shipping:</b> The product is shipped at ambient temperature.		

**Background:** At least 23 different variants of IFN- $\alpha$  are known. The individual proteins have molecular masses between 19-26 kDa and consist of proteins with lengths of 156-166 and 172 amino acids. All IFN- $\alpha$  subtypes possess a common conserved sequence region between amino acid positions 115-151 while the amino-terminal ends are variable. Many IFN- $\alpha$  subtypes only differ in their sequences by one or two positions. Naturally occurring variants also include proteins truncated by 10 amino acids at the carboxy-terminal end. IFNA2 (Interferon Alpha 2) is a Protein Coding gene. This gene is a member of the alpha interferon gene cluster on chromosome 9. The encoded protein is a cytokine produced in response to viral infection. Type I Interferons (IFNs) are well-known cytokines that exert antiviral activity, antitumor activity, and immunomodulatory effects.

**Sequence:** Amino acid sequence derived from Human IFN- $\alpha$ 2a (P01563) (Cys24-Glu188) was expressed.

**Protein length:** The recombinant Human IFN- $\alpha$ 2a consists of 165 amino acids and predicts a molecular mass of 19.4 kDa.

**Biological Activity:** Testing in progress.

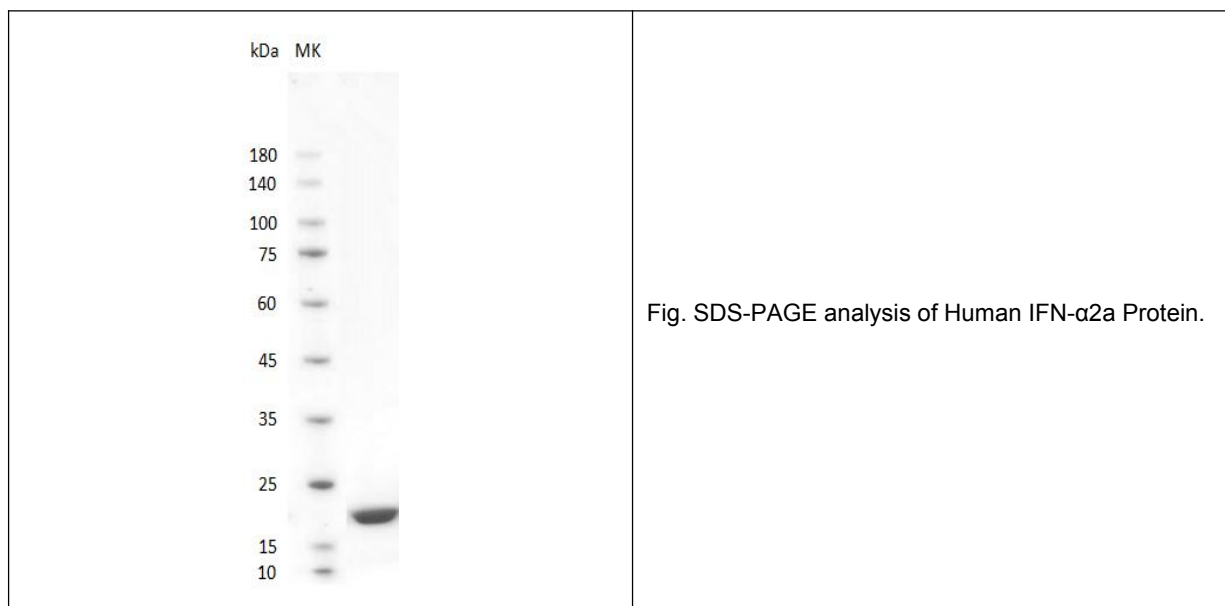
**Endotoxin:** < 1.0 EU per  $\mu$ g of the protein as determined by the LAL method.

**Formulation:** Lyophilized from 20mM Tris, 150mM NaCl, pH 8.0.

**Storage Instructions:** Lyophilized protein product should be stored desiccated below -20°C. Upon reconstitution, the protein should be stored at 4°C between 2-7 days and for future use below -20°C. For long term storage it is recommended to add a carrier protein (0.1% HSA or BSA). Please prevent freeze-thaw cycles.

**Usage notes:** Always centrifuge tubes before opening. It is recommended to reconstitute the lyophilized protein using the

buffer we provided not less than 100 µg/ml, which can then be further diluted to other aqueous solutions.



**Note:** The product listed herein is for research use only and is not intended for use in human or clinical diagnosis. Suggested applications of our products are not recommendations to use our products in violation of any patent or as a license. We cannot be responsible for patent infringements or other violations that may occur with the use of this product.